

Appearance is *EVERYTHING*



STATE-OF-THE-ART PRODUCTION BUILT ON OVER 130 YEARS EXPERIENCE



Experience is the basis upon which JUB has become one of Europe's leading manufacturers specialising in the production of paints, renders and external wall insulation systems.

The origins of the company date back to 1875, when Viktor Gale first started to grind different coloured minerals to produce some of the early paints.

Sustainable Manufacturing is at the heart of JUB's company philosophy. Ecological as well as environmentally friendly, manufacturing processes are fused with state-of-the-art robotic driven production. JUB is working towards complete sustainability by 2020. JUB's Technical Research Centre has 16 micro-climate weather chambers to test all products and to continue JUB's vision and development.



Quality Product, Quality Service. With JUB we ensure that the high quality of our production is not compromised by poor service. JUB offer a range of technical and sales services that include specifications, calculations, site visits and surveys, all designed to deliver a quality project upon completion.

Colour and Creation are at the forefront of any building design and the creation of the right harmonies is essential to overall feel for the project. With JUB's extensive range of products and limitless available colours, using JUB will fulfil the most demanding of schemes.

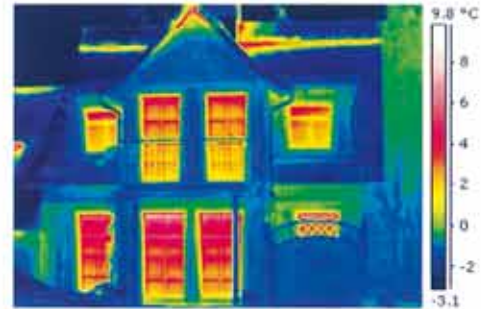
Visit the JUB Design Studio at www.jub.eu where you can transform a range of buildings using the JUB colour palette, giving you a better feel for the colours available.



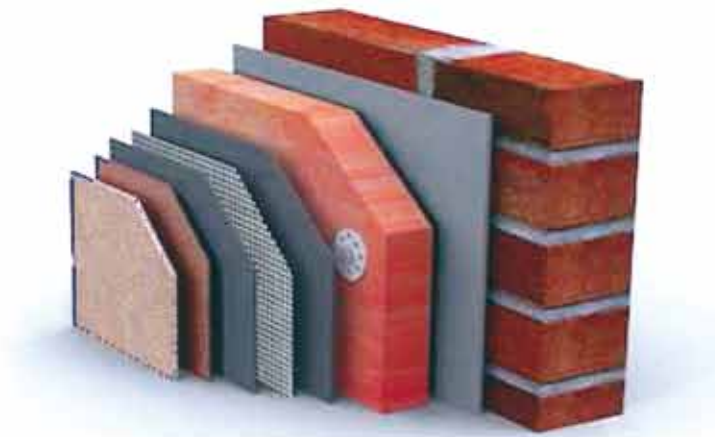


VISUAL TECHNOLOGY WHERE BEAUTY AND EFFICIENCY MEET

A **simple solution** to a major problem, External wall insulation is a proven development in the reduction of heat loss from buildings. The Jubizol system was established in Central Europe over 50 years ago. The system acts as a jacket to the building, keeping the warmth in, whilst protecting the structure from the outside elements.



TYPICAL EXTERNAL WALL BUILD UP



KEY

| | |
|--|--------------------|
| | Substrate |
| | Adhesive Mortar |
| | Insulation |
| | Fixings Anchors |
| | Reinforcing Mortar |
| | Glass Fibre Mesh |
| | Primer |
| | Finish Render |



Whatever the substrate, External wall insulation can be used to thermally upgrade and reduce the cost of heating. New life and longevity can be applied to existing buildings, whilst new-build benefits from a quicker more cost effective approach, rather than the traditional build of the past.

Benefits of Jubizol Thermal Insulation

- U Values as low as 0.08 W/m²k
- No internal disruption
- Protects the building
- Prolongs the lifetime of the building
- Improves living conditions
- Speed of application
- Water repellent
- Reduces CO₂ emissions





The Jubizol Facade Range

JUBIZOL S

Jubizol S incorporates an Expanded Polystyrene insulation board, which is lightweight and cost efficient.

JUBIZOL MP

Jubizol MP is a high performance insulation system using Mineral Fibre and therefore achieves a Euroclass fire rating of A1.

JUBIZOL PHENOLIC

Jubizol Phenolic is a high performance insulation board which achieves the highest of fire ratings but with a slightly lower density.

Durable and Breathable the Jubizol Facade range combines the latest technology to provide a system that will repel dirt for longer, whilst allowing good vapour diffusion for a healthier living climate.

10 year product warranty
Independently tested for a lifetime in excess of 30 years



GUIDELINE TABLE FOR U VALUES USING THE JUBIZOL SYSTEM

Insulation

| Thickness | EPS / Fibre | EPS / Fibre | EPS / Fibre | EPS / Fibre | EPS / Fibre |
|-----------|-------------|-------------|-------------|-------------|-------------|
| 60mm | 0.46 | 0.43 | 0.35 | 0.45 | 0.40 |
| 70mm | 0.41 | 0.39 | 0.32 | 0.40 | 0.36 |
| 80mm | 0.37 | 0.35 | 0.29 | 0.36 | 0.33 |
| 90mm | 0.33 | 0.32 | 0.27 | 0.33 | 0.30 |
| 100mm | 0.31 | 0.29 | 0.25 | 0.32 | 0.28 |
| 110mm | 0.28 | 0.27 | 0.24 | 0.28 | 0.26 |
| 120mm | 0.26 | 0.25 | 0.22 | 0.26 | 0.24 |
| 130mm | 0.25 | 0.24 | 0.21 | 0.24 | 0.23 |
| 140mm | 0.23 | 0.22 | 0.20 | 0.23 | 0.22 |
| 150mm | 0.22 | 0.21 | 0.19 | 0.21 | 0.20 |
| 160mm | 0.20 | 0.20 | 0.18 | 0.20 | 0.19 |
| 180mm | 0.18 | 0.18 | 0.16 | 0.18 | 0.18 |
| 200mm | 0.17 | 0.16 | 0.15 | 0.17 | 0.16 |
| 300mm | 0.12 | 0.11 | 0.11 | 0.12 | 0.11 |
| 400mm | 0.09 | 0.09 | 0.08 | 0.09 | 0.09 |

All values are quoted as W / m²K and are approximate based on the construction breakdown below. Please contact for Phenolic 'U' Value Calculations

Construction Key

- Timber / Metal Frame Construction 2 x 12.5mm plasterboard, unfilled stud cavity, 10mm cement board
- Timber / Metal Frame Cavity Construction 2 x 12.5mm plasterboard, unfilled stud cavity, 10mm cement board, 15mm ventilated cavity
- 215mm Lightweight Blockwork 12.5mm plasterboard on dabs, 215mm lightweight blockwork with a thermal conductivity of 0.22 W/m K
- 140mm Medium Dense Blockwork 12.5mm plasterboard on dabs, 140mm medium dense blockwork with a thermal conductivity of 0.61 W/m K
- 250mm Block / Brick Cavity Construction 12.5mm plasterboard on dabs, 100mm medium blockwork, unfilled cavity, 102.5mm external brickwork

CAVITY RAIL INSULATION SYSTEMS

The Jubizol Cavity Range



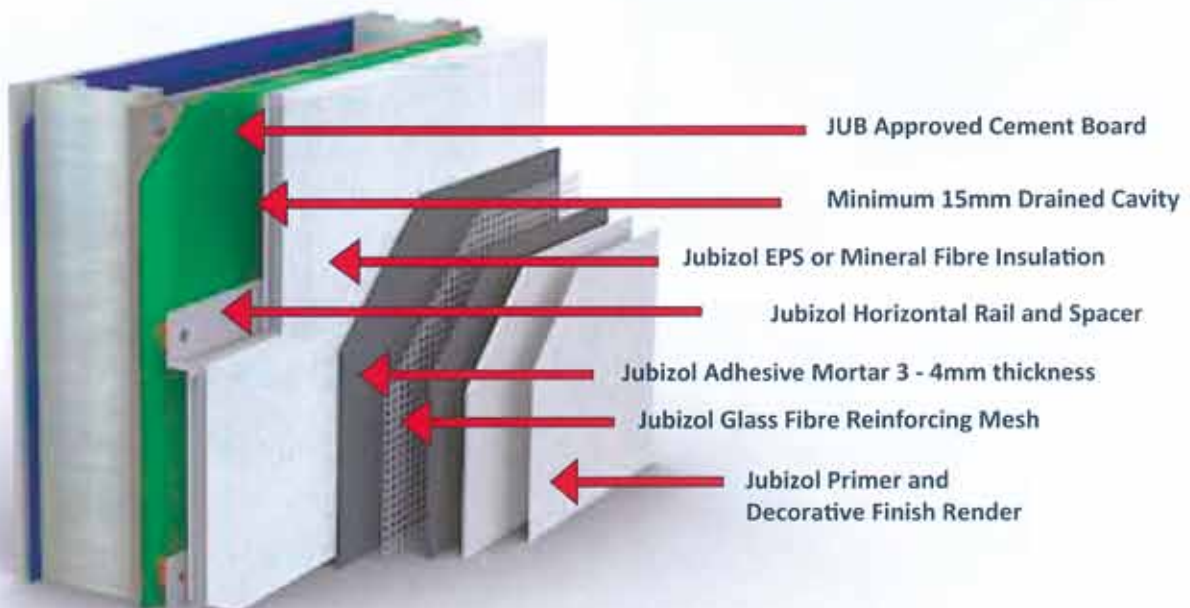
JUBIZOL CAVITY S

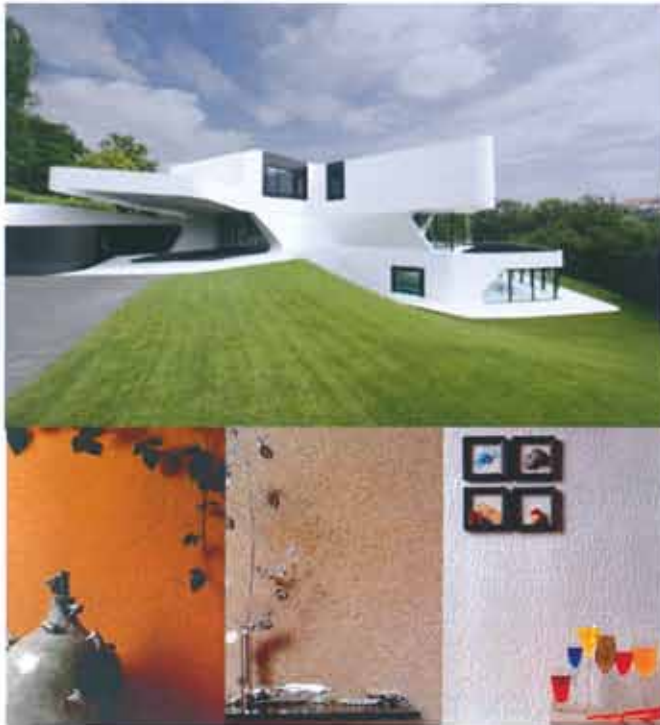
Jubizol Cavity S Expanded Polystyrene insulation board, which uses PVC horizontal rails and connectors.

JUBIZOL CAVITY MP

Jubizol Cavity MP Mineral fibre insulation board which uses aluminium horizontal rails and connectors.

To meet NHBC requirements, the Jubizol Cavity Rail system allows for a minimum 15mm drained cavity to be installed. This meets the requirements set out by NHBC and others for timber or steel framed structures. The cavity allows for any trapped moisture to drain out through the slotted base rail.





JUBIZOL Silicate/ Silicone/ Nanoxil



Good vapour permeability
Algae and dirt resistant
Wide range of colours
Excellent water repellency

JUBIZOL Acrylic/ Unixil



Highly flexible
Good water repellency
Widest range of colours
suitable for deep / bright colours

JUBIZOL Mineral



Very Robust
Excellent vapour permeability
Easy to use
Wide range of textures

JUBIZOL Brickslip



Flexible acrylic brickslip
Suitable for insulation and render
Lightweight
Range of textures and colours

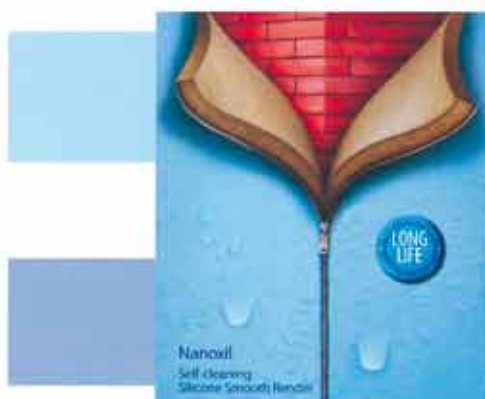
Flexibility of Design, is exactly what the Jubizol renders and finishes deliver. The extensive range of renders and grain sizes allow for a greater variety of textures, and with the vast palette of colours available JUB can help design a project incorporating visual creativity with long term performance.



**Smooth Textured
K Grain**

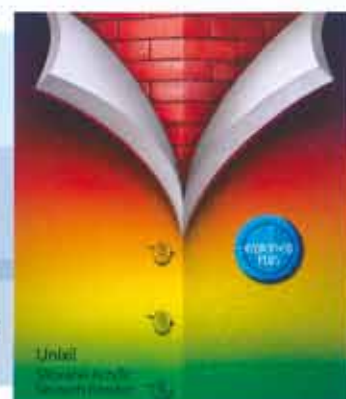


**Trowelled Textured
R Grain**



Nanoxil
Self Cleaning Technology

Unixil
Benefits of acrylic, silicone
& silicate in one product





130 years experience of paint production makes JUB one of Europe's leading manufacturers. Continued research and development has meant that the product range is kept at the forefront of today's technology. Within the extensive Jubizol paint range, are a number of advanced paints and coatings design for use with the Jubizol Facade render systems.

Jubizol Silicone Paint for use with mineral based renders or where superior weather protection is required.

Jubizol Acrylic Paint for a combination of good weather protection combined with deep or bright colours.

Jubizol Silicone H Paint is a transparent coating for use with mineral renders for long term protection against weathering and algae / mould.



Standard 10 year guarantee can be extended on certain systems

This is just the start of the JUB product range, with scratch renders, fine renders, crack bridging paints and state of the art self cleaning finishes. JUB manufacture a range of basecoat renders to supplement the finishes as well as lime based paints, concrete paints, renovation render and waterproof coatings. A range of finishes and coatings that are suitable for interior or exterior use.

Appearance is Everything and for the special project that requires that little bit extra then Marmorin from JUB is the answer. A decorative wall coating that can create a multitude of effects to rival polished plasters. The use of metallic colours gives a more contemporary feel to a wall, whilst the tinting processes utilised by JUB, mean an endless array of shades to fulfil anyone's palette.





Appearance is everything



ISO 9001 Q - 159
ISO 14001 E - 034
OHSAS 18001 H - 022



Official Partner

JUB Systems UK Ltd
The Meridian
4 Copthall House
Station Square
Coventry
CV1 2FL

Tel: 0845 688 9866
Fax: 0845 688 9877

Email info@jub.org.uk
web www.jub.org.uk



Appearance is
EVERYTHING

JUBIZ 


facade
system

JUBIZ 

render
system

JUBIZ 

paint
system

JUBIZ 

cavity
system